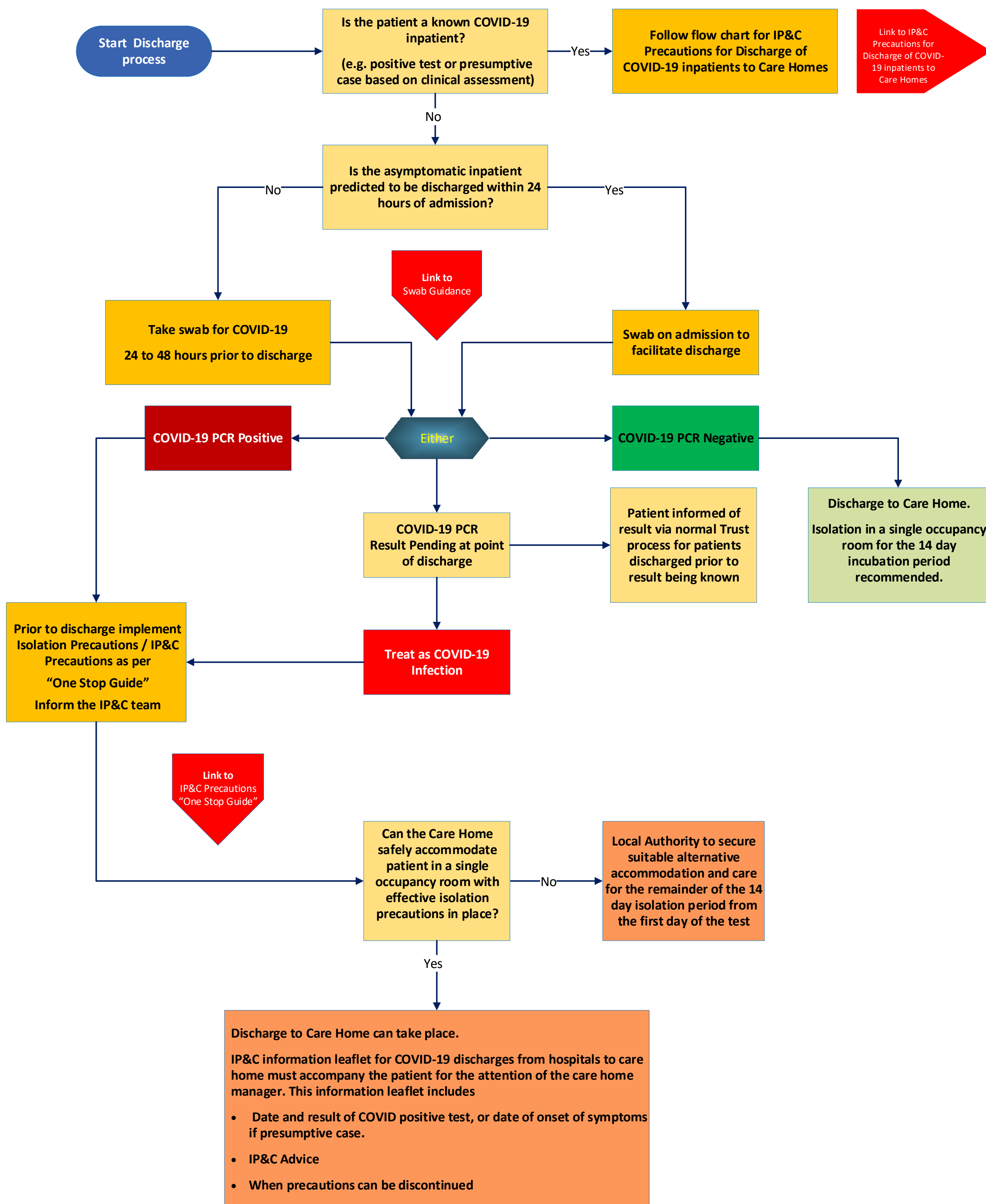


This guidance applies to inpatients only. Attenders at ED who are not admitted to the hospital do not need to be screened



Version 2

How to do a Swab

To ensure a good quality specimen, it is important to collect epithelial cells from the nasal septum and the pharynx. Avoid collecting nasal secretions and saliva.

Using one swab.....

- First swab the throat:-

Insert the swab into the mouth of the patient aiming for the back of the throat. Rub the swab across the posterior pharyngeal wall and tonsillar area on both sides, avoiding the tongue and sides of the mouth. Rub swab back and forth about 5 times and hold in place for at least 5 seconds to absorb cells.

- Then swab the nose:-

While gently rotating the swab, insert swab into one nostril until resistance is met at the turbinates (approx. 2-3 cm) . Rotate the swab several times against nasal wall and repeat in other nostril using the same swab.

- Place tip of the swab into sterile viral transport media tube and break off the applicator stick.
- Double bag sample & label with a biohazard sticker.
- Walk the swabs directly to the lab. DO NOT POD.